



The Royal College of Anaesthetists ELECTRONIC LOGBOOK

HandBase to PC Glitches 3

PROBLEM PAGES

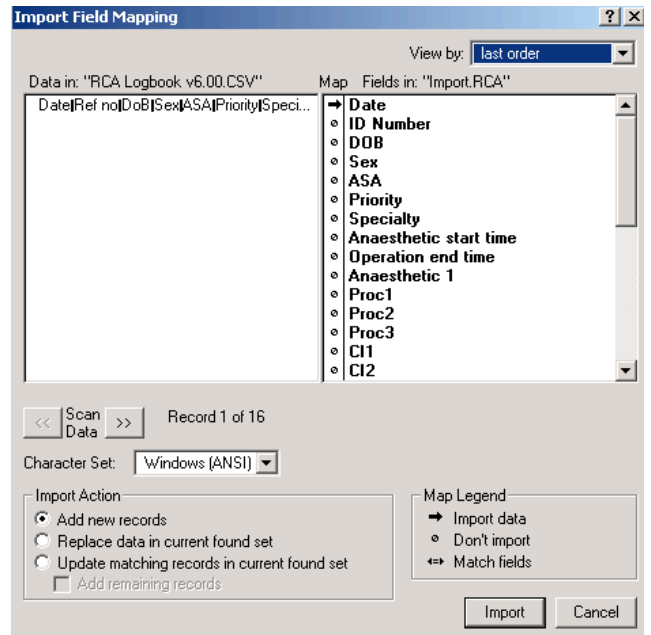
Q: WHY DOES EVERYTHING COME ACROSS ON ONE LINE DURING THE IMPORT PROCESS?

This problem comes to light when the HandBase exported text copy of the logbook *RCA Logbook v6.00.csv* is imported into the PC Logbook.

When the field-mapping window appears there seems to be only one line of data in the exported copy of the HandBase logbook. This then gets imported into just the date field of the PC logbook.

This problem is caused by one of two reasons:

1. Either the field separator set in the HandBase Desktop preferences is a 'COMMA' when it should be a 'TAB'.
2. Your PC interprets a 'TAB-separated file' as a 'COMMA-separated file' because you have left the suffix as ".CSV"



1. THE SIMPLE SOLUTION

Try just renaming your exported file from *RCA Logbook v6.00.csv* to, for instance, *RCA Logbook v6.00.txt*

2. THE MORE COMPLEX SOLUTION

On the PC version of HandBase Desktop:
Go to the 'File' menu and set the 'Preferences'.
Set the CSV Separator Symbol to 'TAB'

On the Mac version of HandBase Desktop:
Go to the 'Edit' menu and set the 'Preferences'.
Set the CSV Separator Symbol to 'TAB'

